

PORT DECARBONISATION AND ENVIRONMENTAL SUSTAINABILITY

15:00 – 16:00

Current and Emerging Solutions



CACHE Net Zero port services

Dave Fox

Geospatial Insight



In association with **Redshift Associates**

PORT DECARBONISATION & ENVIRONMENTAL SUSTAINABILITY WORKSHOP

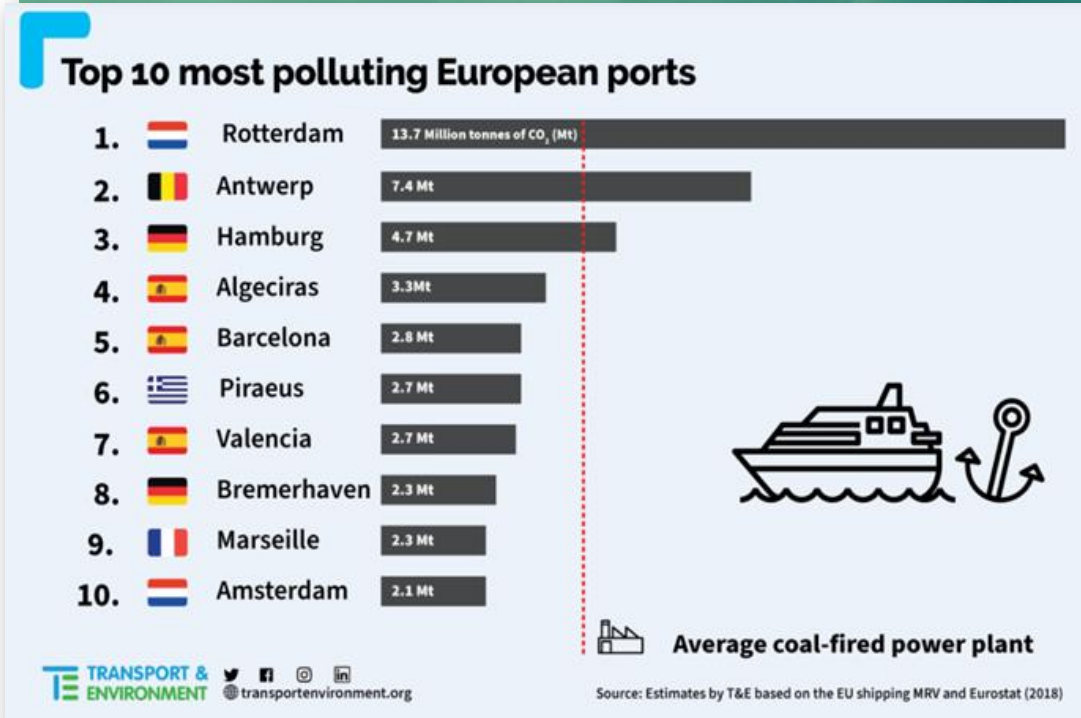
CACHE NET ZERO – LEVERAGING SPACE ASSETS TO ACCELERATE
PORT DECARBONISATION

Dave Fox | CEO | Geospatial Insight

CACHE Net Zero - Vision

The Growing Problem

- Global carbon dioxide (CO₂) emissions in 2023 were at record highs, driven by human activities that release more carbon into the atmosphere than natural processes can remove.
- Fossil fuel emissions reached record levels, increasing 1.1% from 2022 to 36.8 billion metric tons
- The maritime sector accounted for *circa* 2.7% of global emissions in 2023 (OECD)
- Ports, and their supply chain, are significant emitters of GHGs and other air pollutants, but regulation and action to address this lags behind other sectors
- CACHE NZ supports and accelerates the development, adoption and ongoing deployment of low emission strategies for port operators and stakeholders globally



Source: The European Federation for Transport and Environment, Feb 2022



Introducing CACHE Net Zero

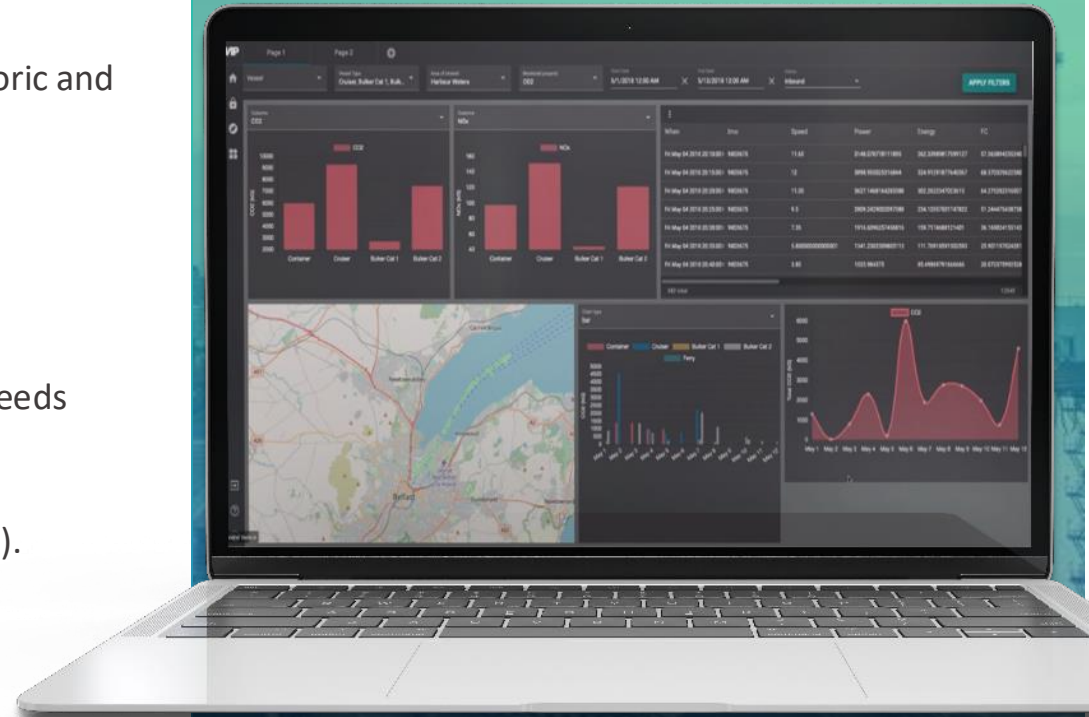
A subscription-based service to assist Port Authorities, Port Operators, and Shipping companies to develop, implement and monitor the progress of strategies to reduce emissions and energy consumption.

- **Air Quality Inventory and Baseline:**
 - Mapping and locating the main sources of air pollution, differentiating between emissions from land- and maritime-side activities.
- **Ongoing Air Quality Emission Monitoring:**
 - Regular, data-driven monitoring and analytics of air quality and emissions.
 - Provides Monitoring, Reporting and Validation (MRV) of pollution reduction activities and input into future air quality strategies.
- **Analytics:**
 - Clean Energy Audit: independent technical and economic analysis of renewable energy potential and storage systems to support ports' transition to net zero.
- **GHG Emission Inventories:**
 - Baseline surveys of greenhouse gas emissions to develop and update strategies for port environmental sustainability.



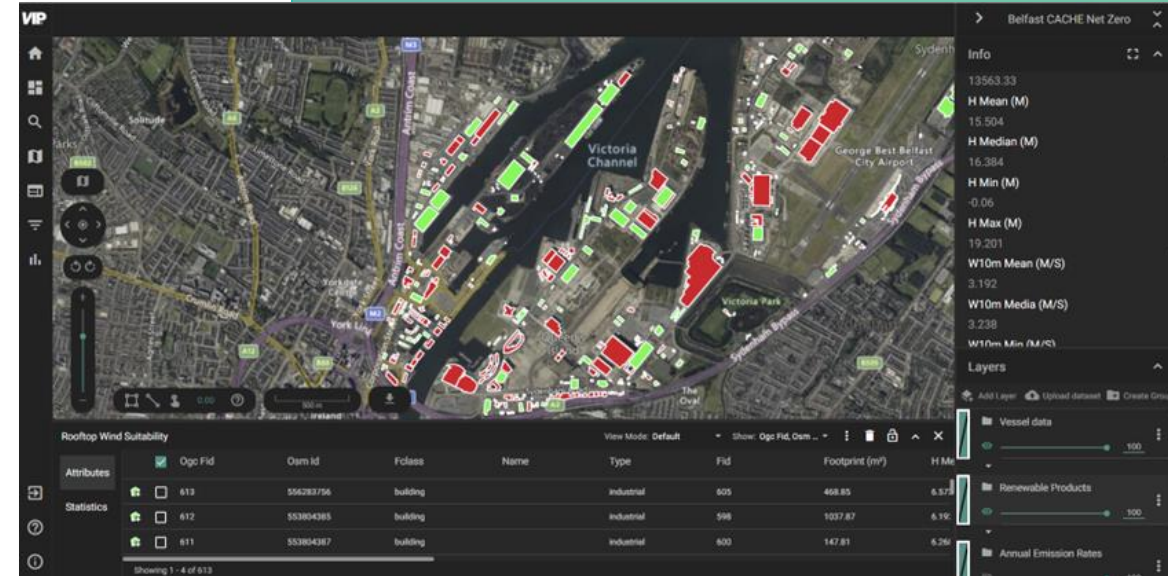
Emissions Intelligence - Powered by Data

- **Air Quality Inventory and Baseline:**
 - Uses a wide range of geospatial, emission and localised activity databases. These include:
 - Traffic data for the port and its surrounding area
 - National level intelligence for industrial point and grid emission sources
 - Shipping activity using Automated Identification System (AIS) feeds for historic and current shipping activity within the port area
 - Weather data and other satellite data sources (e.g. CAMS)
 - On-site ground-based air quality sensor data
- **Ongoing Air Quality Emission Modelling & Monitoring:**
 - Automatic emission updates
 - Sources accessed as per above with additional satellite data and other real-time feeds
- **GHG Emission Inventories:**
 - Upgrading the air quality monitoring to include other emissions sources (e.g. CO₂). Potentially includes:
 - Client data
 - Available energy usage/performance data
 - Additional weather data
 - Methane monitoring services using satellite analytics



Adding Value to Strategic Planning

- **Renewable energy planning**
 - Leveraging geospatial intelligence, scenarios for renewable energy generation can be created and evaluated
- **Electric vehicle infrastructure planning**
 - Existing charge point availability can be mapped and optimal siting of new sites for both the port and surrounding area generated
- **Visualisation**
 - Access geospatial intelligence via a dedicated platform-based tool.
 - Analytics are accessed through an on-line portal which can be integrated into wider port management systems
 - Additional layers of land optimisation, renewable energy planning and other key intelligence layers can be added
 - All intelligence provided by the system can also be accessed via an API for direct delivery into an existing Net-Zero or operational port management system



Dave Fox | CEO

M: +44 (0) 7799 437114

E: dave.fox@geospatial-insight.com

W: geospatial-insight.com

