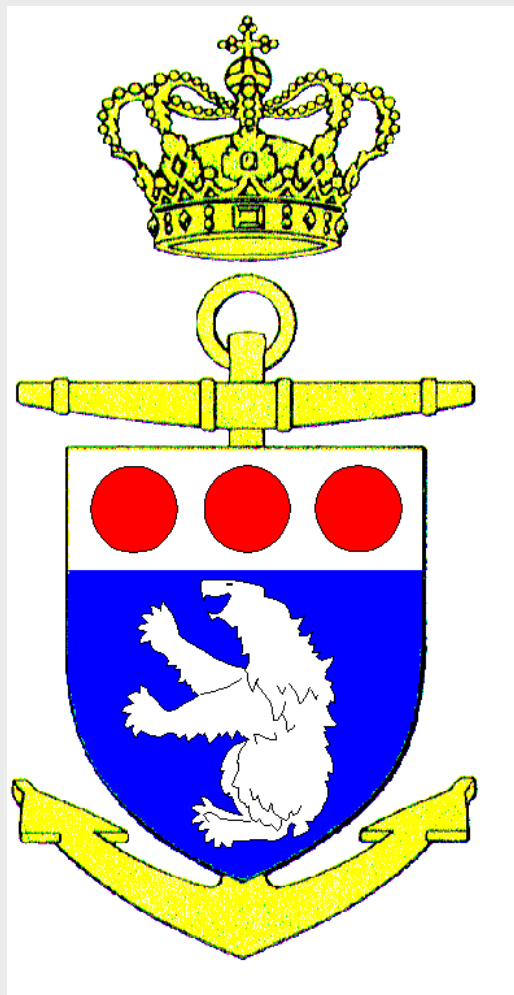




GREENLAND COMMAND



Commander Hans Ole Nielsen

GRØNLANDS KOMMANDO



MARITIME OPERATIONS IN THE ARCTIC



GRØNLANDS KØ

Commander
Hans Ole Nielsen
Greenland Command



Keywords



- **Design to task.**
- **Endurance and sustainability.**
- **Experienced and well trained personnel**
- **Affordable manning/multi-tasking.**
- **Logistics handled by personnel with "hands on" Arctic expertise.**
- **COMMS**



TASKS

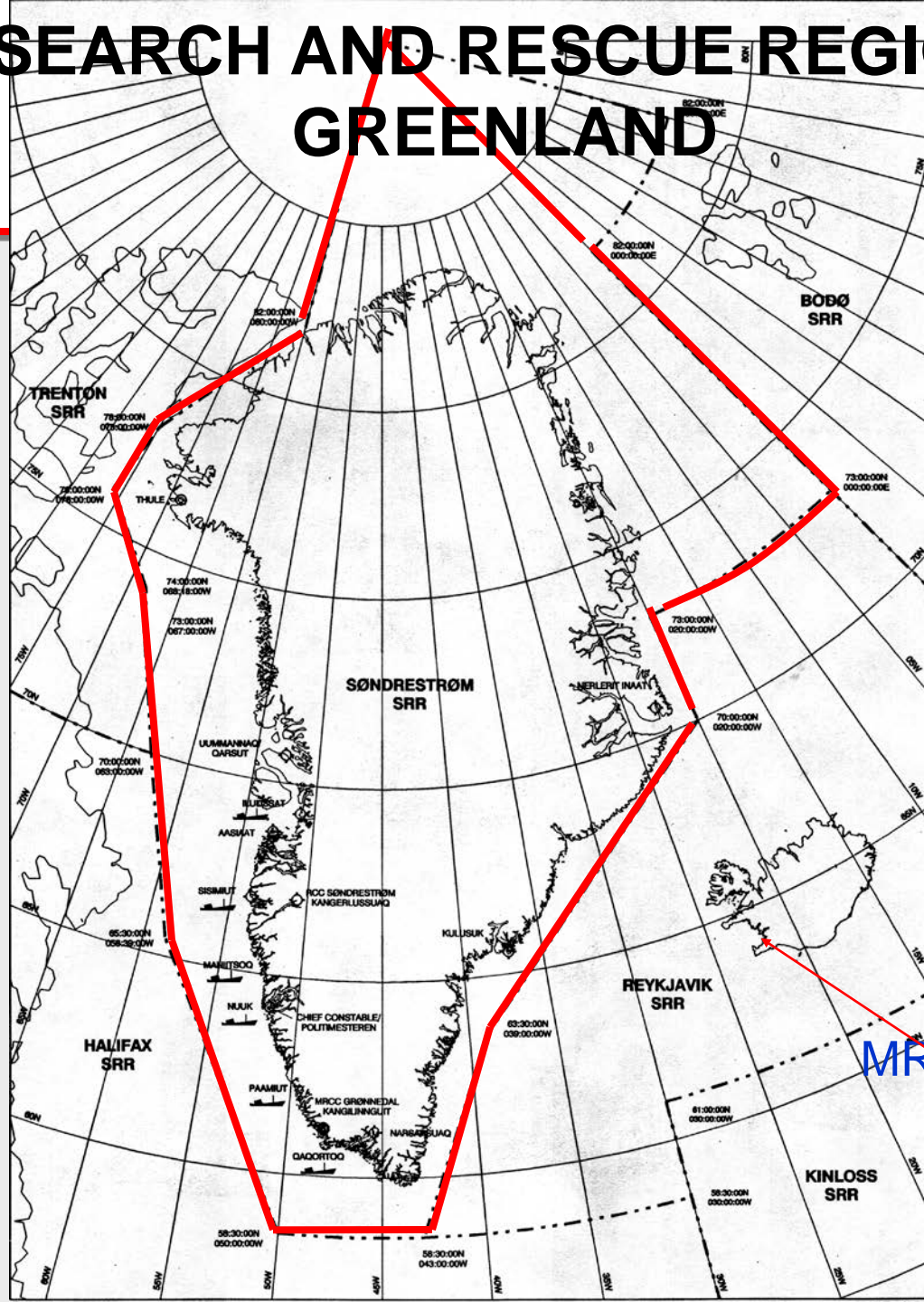


- Sovereignty Enforcement
- **Search and Rescue**
- Fishery Protection (securing 85 % of the Greenlandic gross income)
- Support for the local community
- Other tasks





SEARCH AND RESCUE REGION GREENLAND



RCC TRENTON

RCC BODØE

RCC HALIFAX

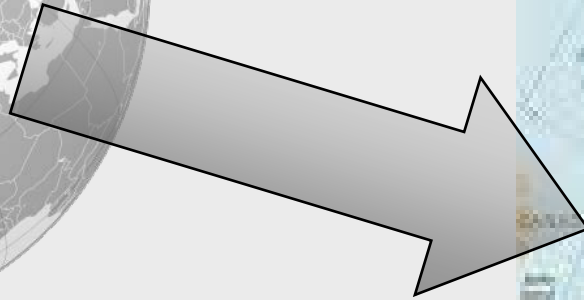
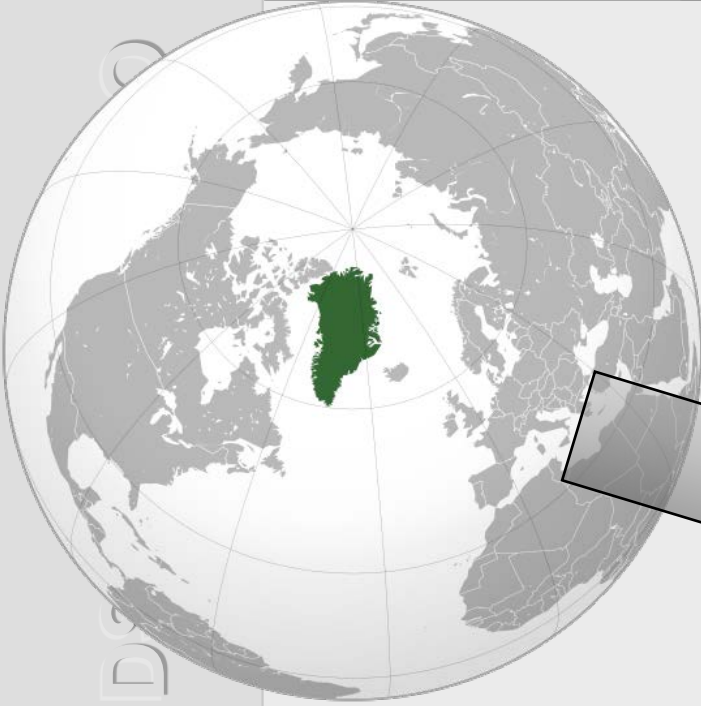
MRCC REYKJAVIK

GRØNLANDS KOMMANDO





THE PRIMARY AREA OF OPERATIONS



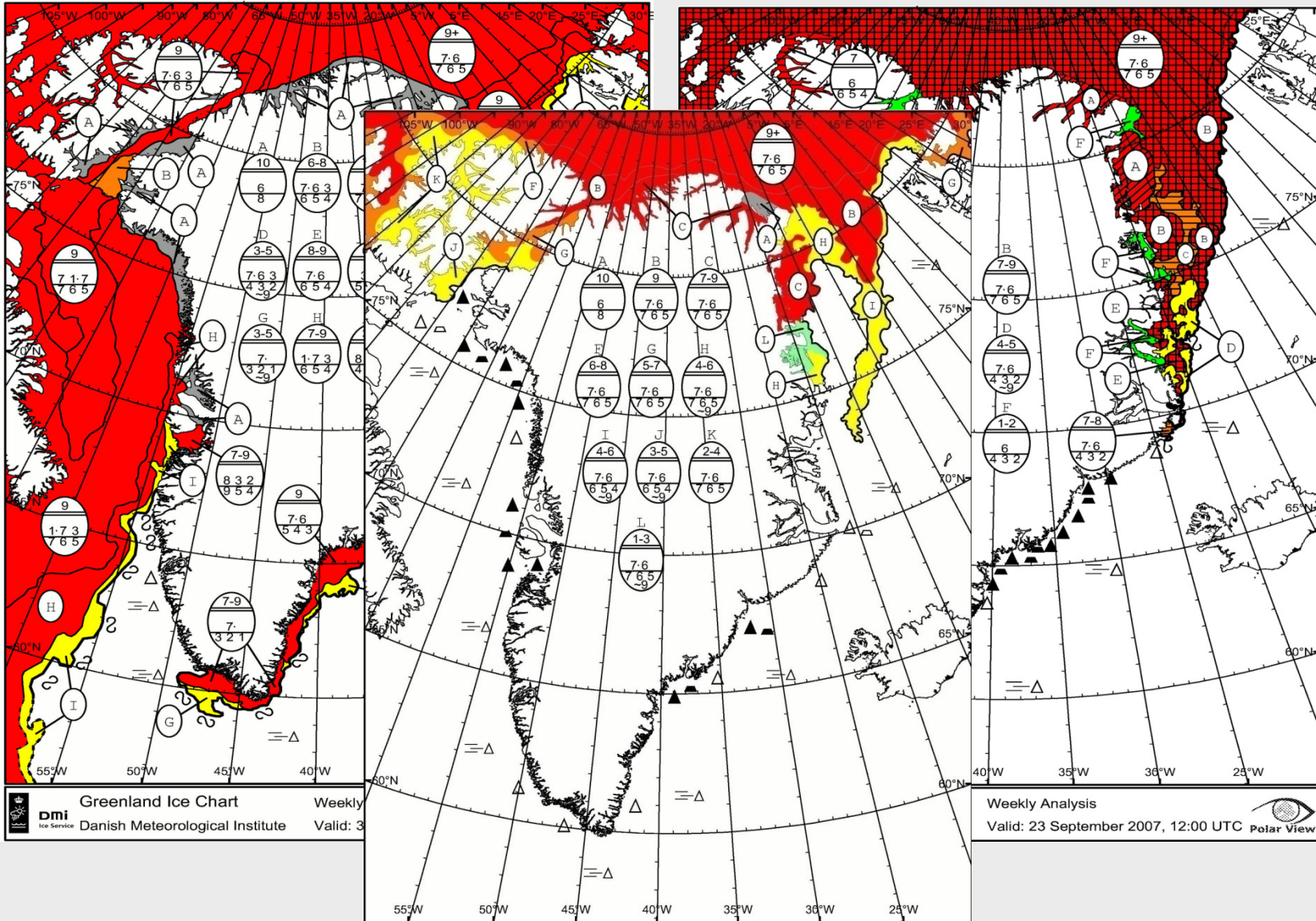
GRØNLANDS





MAIN FACTOR: THE ICE CONDITIONS!

GRØNLANDS KOMMANDO



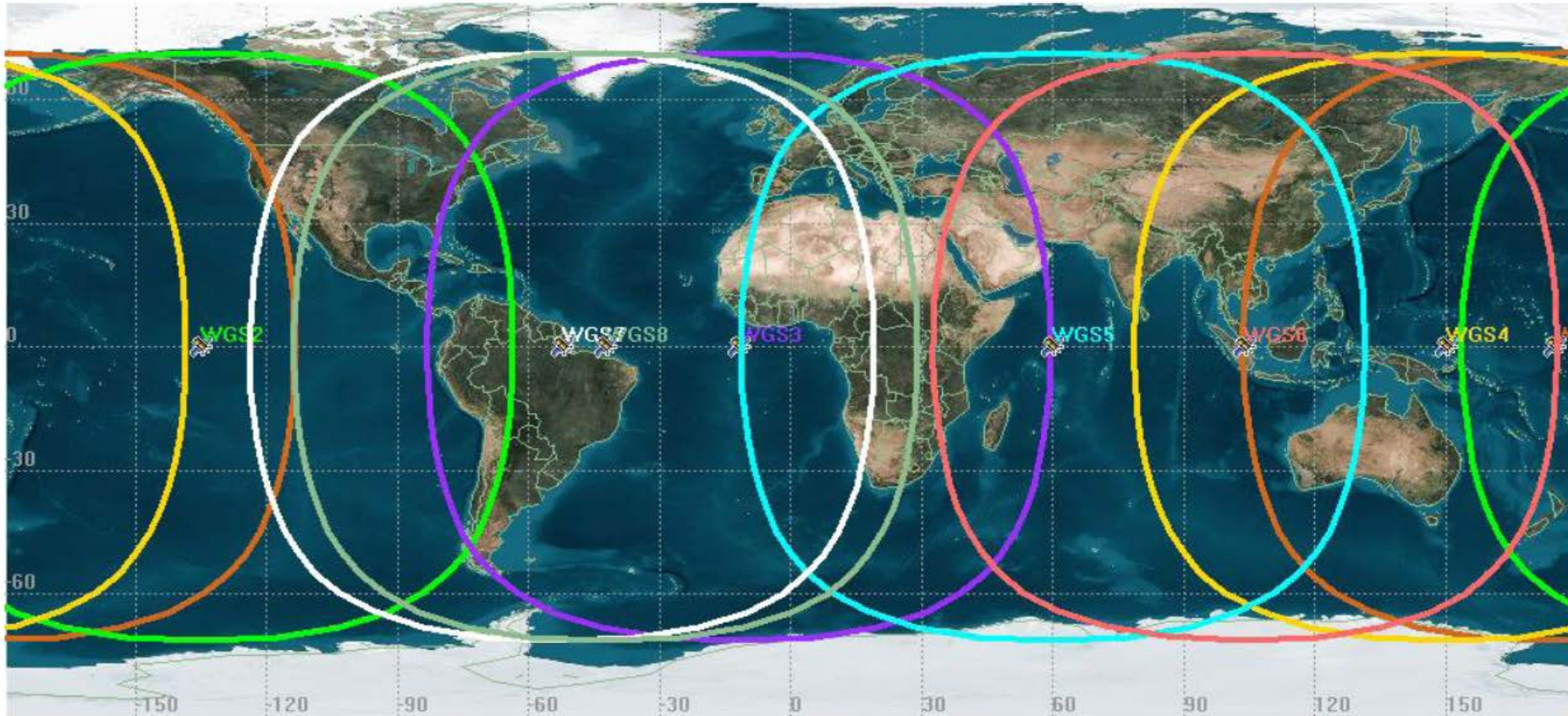


FOUO REL TO USA, Australia, Canada, Belgium, Luxembourg, Netherlands, Denmark, UK

*U.S. Army Space and Missile Defense Command/
Army Forces Strategic Command*



WGS "8-ball" Constellation



"Secure the High Ground"

10° Field of View Shown

FOUO REL TO USA, Australia, Canada, Belgium, Luxembourg, Netherlands, Denmark, UK



Factors for sustained operations in the Arctic



- **Enormity and remoteness under extreme conditions - You will meet the perfect storm – "every year"!**
- **Reinforcement or assistance will often be impossible in the near term.**
- **Poor access to the Arctic in the winter – logistics require 2 years of planning and must be right!**



EMERGING CHALLENGES



Potential opening of new international shipping routes across the Arctic

Increasing offshore activity

Mass tourism

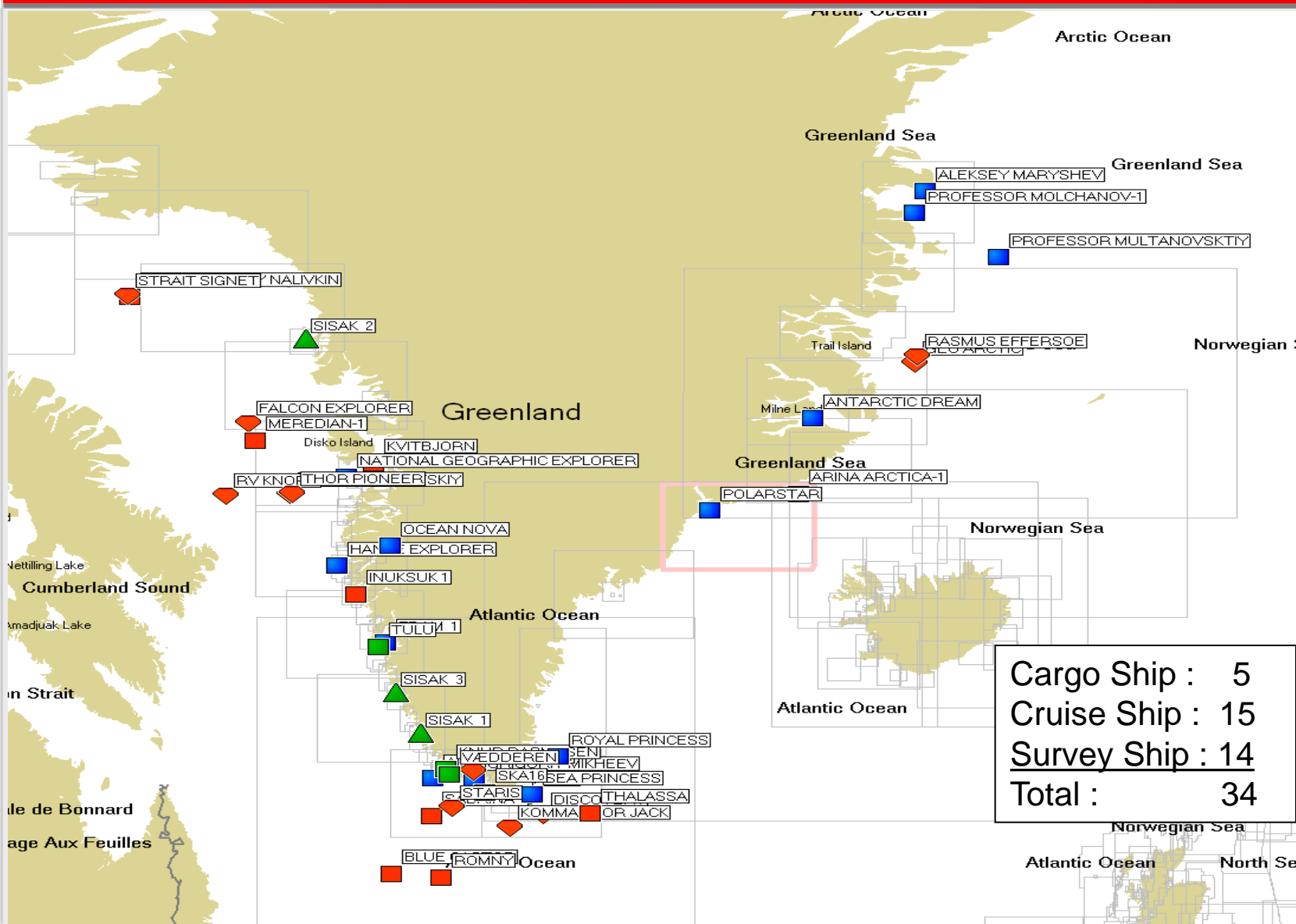




Overview 8th September 2008



GRØNLANDS KOMMANDO



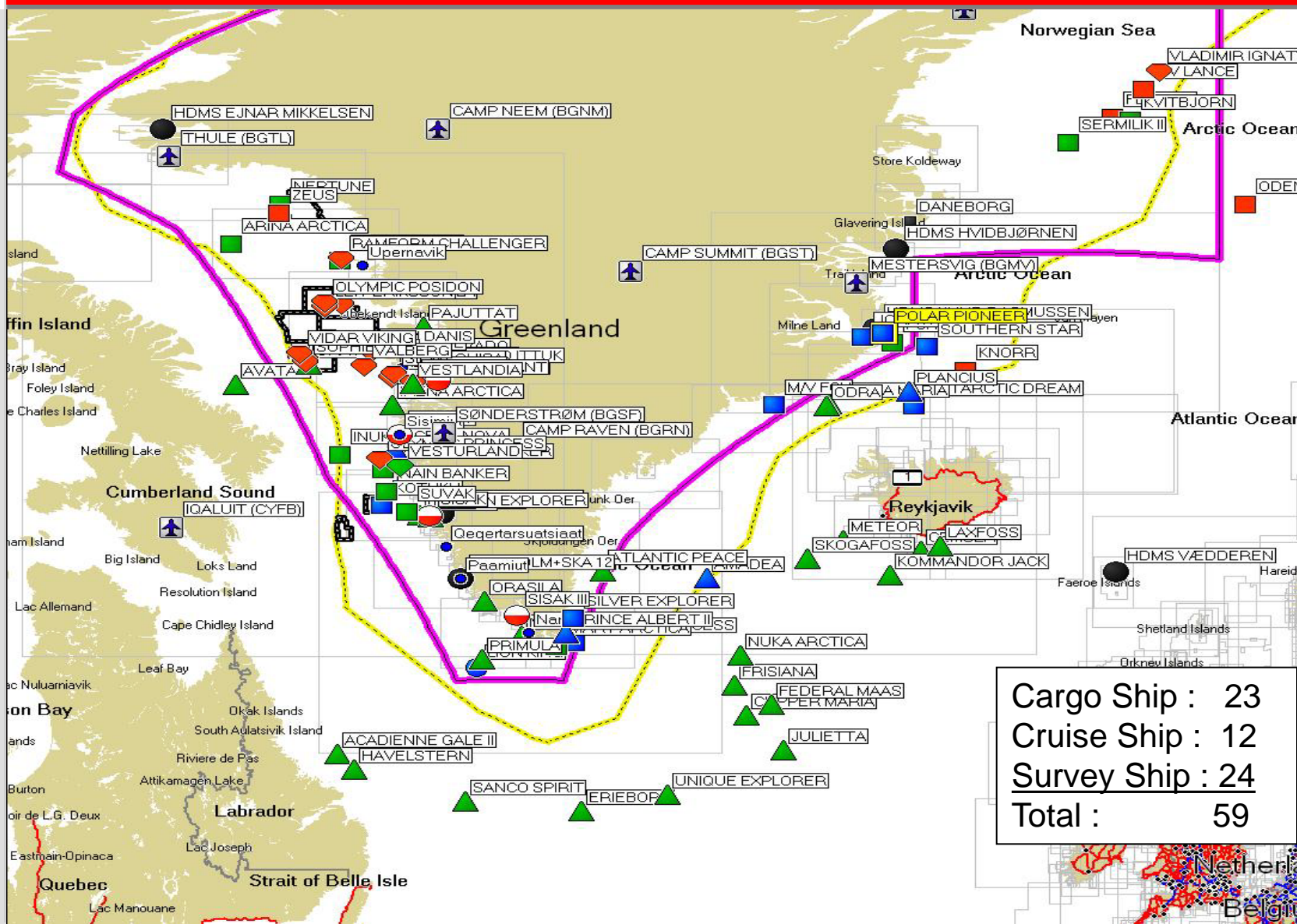
| | |
|---------------|----|
| Cargo Ship : | 5 |
| Cruise Ship : | 15 |
| Survey Ship : | 14 |
| Total : | 34 |



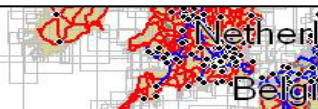
Overview 6th September 2011



GRØNLANDS KOMMANDO



| | |
|----------------|-----------|
| Cargo Ship : | 23 |
| Cruise Ship : | 12 |
| Survey Ship : | 24 |
| Total : | 59 |





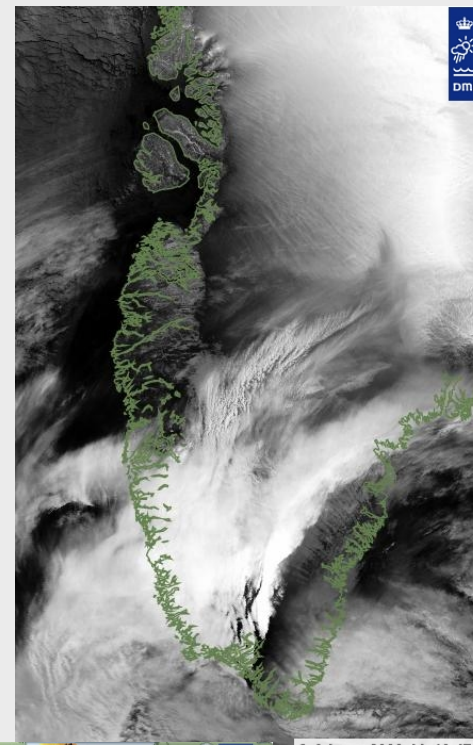
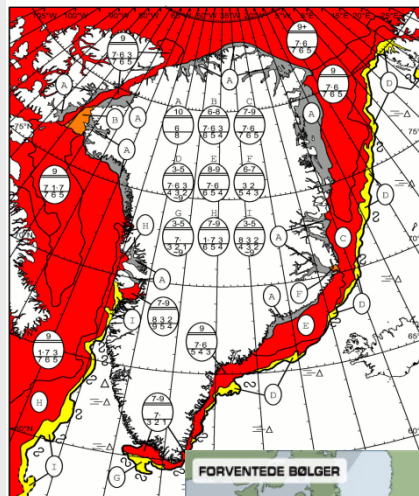
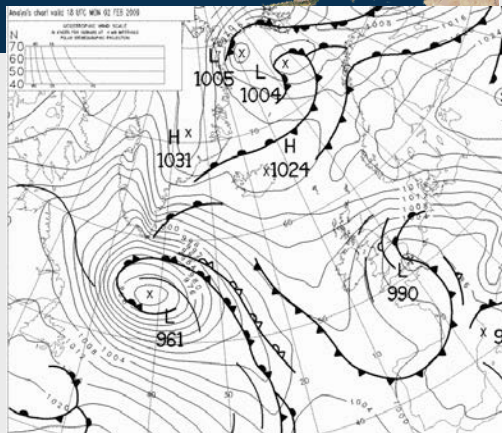
CONDITIONS/FACTORS



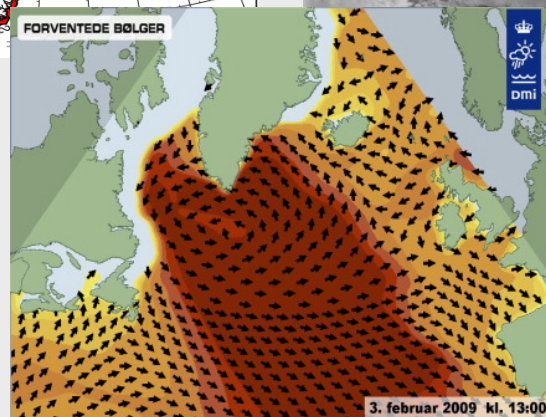
GRØNLANDS KOMMANDO

CONDITIONS/FACTORS

- Geography
- Demography
- Ice and weather conditions (summer / Winter)
- Climate change?



2. februar 2009 kl. 19:47



3. februar 2009 kl. 13:00



In the Air



GRØNLANDS KOMMANDO



Challenger CL-604

Hercules C-130J





Operating in the Arctic: FEATURES ABOVE THE WATERLINE

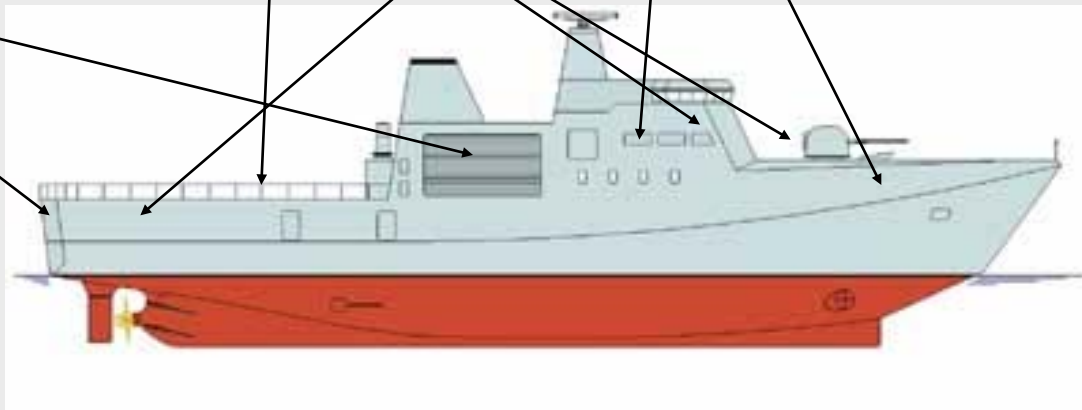


GRØNLANDS KOMMANDO

Closed and heated hangar for RHIB and SAR-vessel

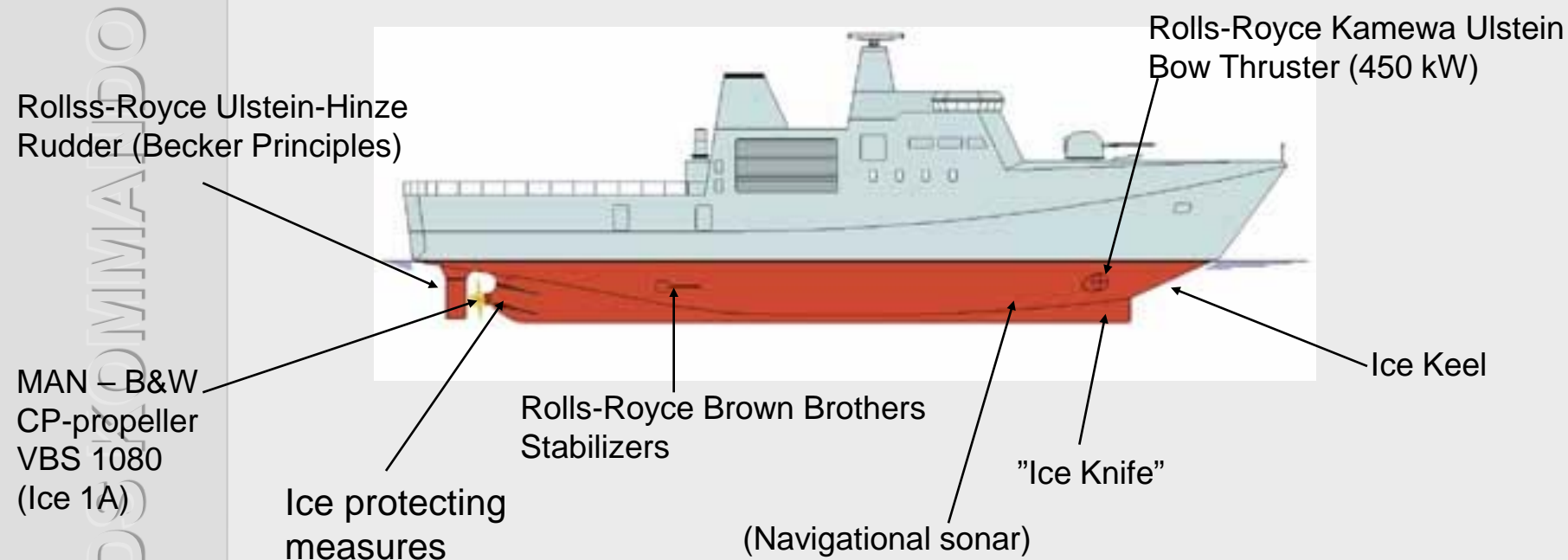
De-icing (heat) in superstructure and open decks

Closed and heated working areas /decks





Operating in the Arctic: FEATURES BENEATH THE WATERLINE





Operating in the Arctic: SPECIAL FEATURES: THE SAR-VESSEL



GRÖNLANDS KOMMANDO



Swedish STOREBRO-class

Length: 12,00 m
Beam: 2,90 m
Draught: 0,70 m
Crew: 2 persons
Cargo: 10 persons/1000 kg
Speed: 37 kn
Range: 500+ nm





HELICOPTER OPERATIONS



GRØNLANDS KOMMANDO



- Medium-helicopter flight-deck (EH-101)
- Able to perform RRR and HIFR
- No hangar but can act as gas station

Find the SHOL video at:

www.prismdefence.com



THETIS class





COMM CHALLENGES IN THE ARTIC



Isbjørneø, juli 2011



Questions

