

# Space for Sustainable, Connected and Liveable Cities

Call for Proposals (Non-competitive)

Beatrice Barresi: [Beatrice.barresi@esa.int](mailto:Beatrice.barresi@esa.int)

Kavitha Muthu: [Kavitha.muthu@ext.esa.int](mailto:Kavitha.muthu@ext.esa.int)

**Business Applications - Space Solutions**  
**Directorate of Commercialisation, Industry and Competitiveness**

# Welcome to the webinar

## Before we start...

- Please keep your microphones muted during the webinar and make sure your webcam is switched off.
- You can use the conversation function anytime to submit your questions. They will be addressed during the Q&A at the end of the webinar



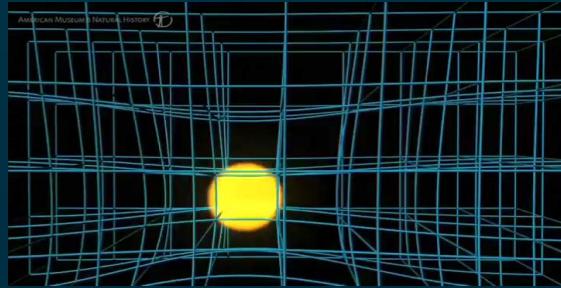
- ESA Welcome and **Introduction**
- About ESA Business Applications
- About the Opportunity: **Space for Sustainable, Connected and Liveable Cities**
- Our Guest Speakers:
  - **Jan Schäfer** – Team Lead, City of Essen
  - **Mathieu Luinaud** – Project Manager, City of Paris
- **How to Apply** to the competition
- **Q&A** Session



# European Space Agency's Four Main Pillars



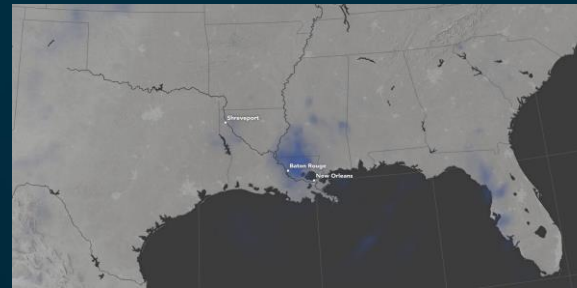
## Science and Exploration



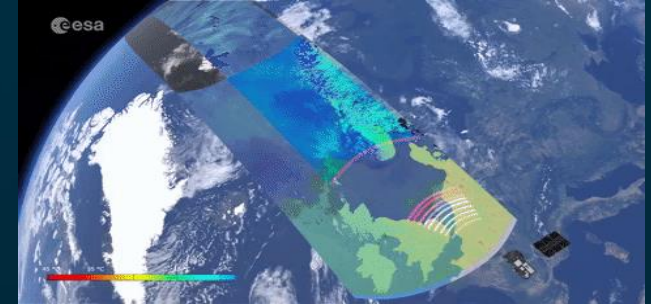
## Enabling and Support



## Safety and Security



## Applications





# What's in it for us?



## SOCIO-ECONOMIC IMPACT

Deliver social value and economic sustainability



## USE OF SPACE TECHNOLOGY

Expand the utilization of space in new markets and user communities



## INDUSTRY COMPETITIVENESS

Strengthen European Industry competitiveness on the global space and non-space markets



# What can BASS offer to companies?

Our aim is to work together to make your idea commercially viable, with:

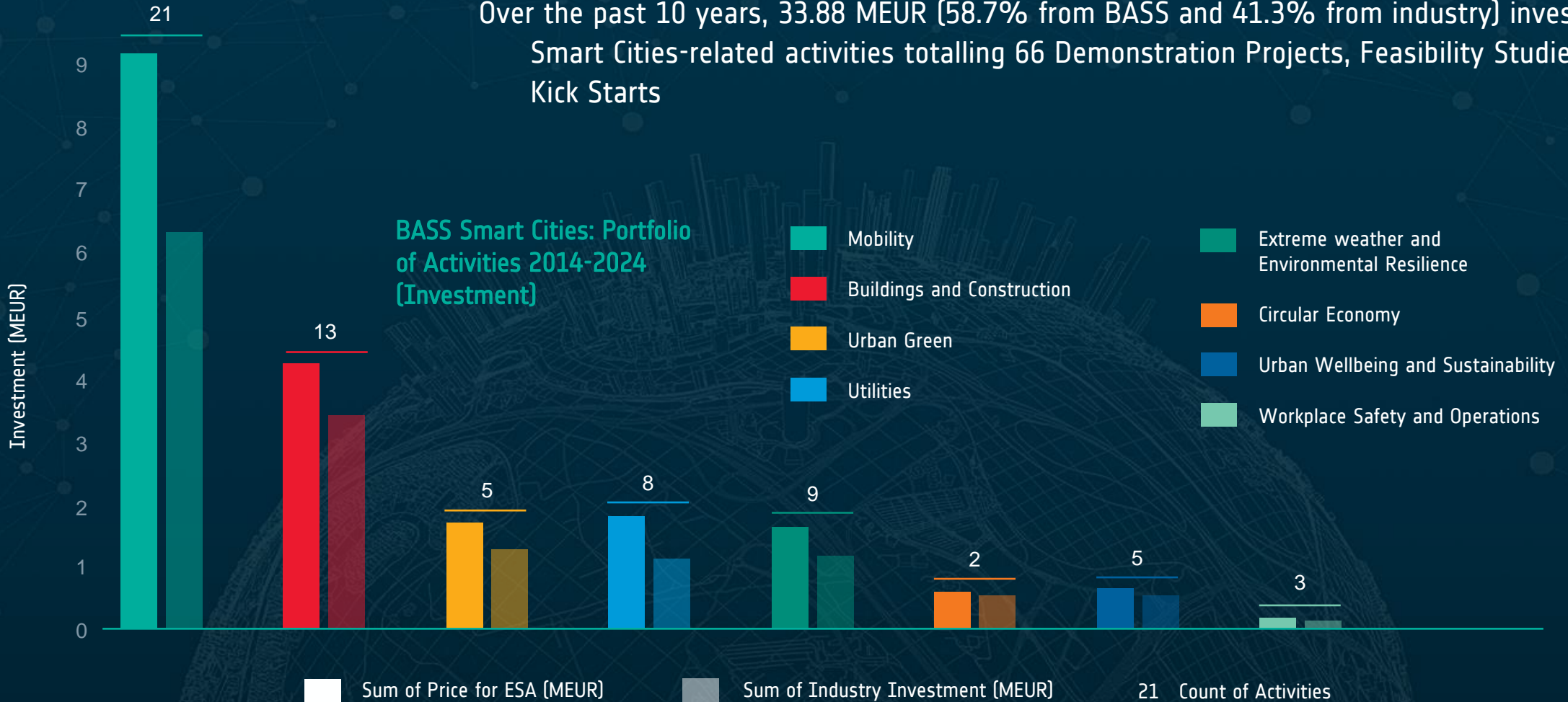


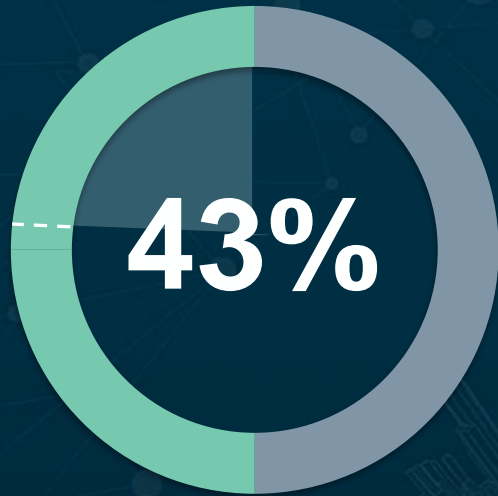




# Investment from BASS

Over the past 10 years, 33.88 MEUR (58.7% from BASS and 41.3% from industry) invested in Smart Cities-related activities totalling 66 Demonstration Projects, Feasibility Studies and Kick Starts

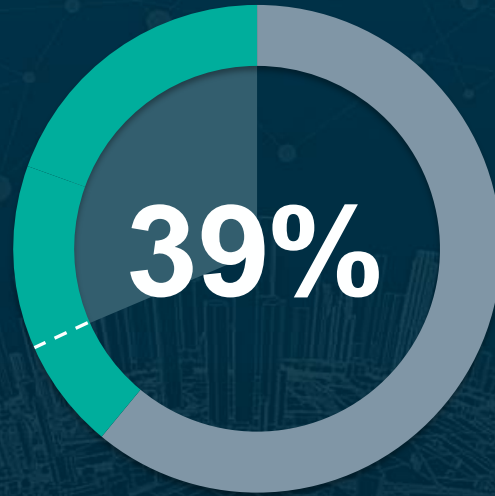




Companies new to BASS    SMEs

## Smart Cities Sector

43% of SC projects have been implemented by companies that are new to BASS and nearly half (46%) were classified as SMEs.



Companies new to BASS    SMEs

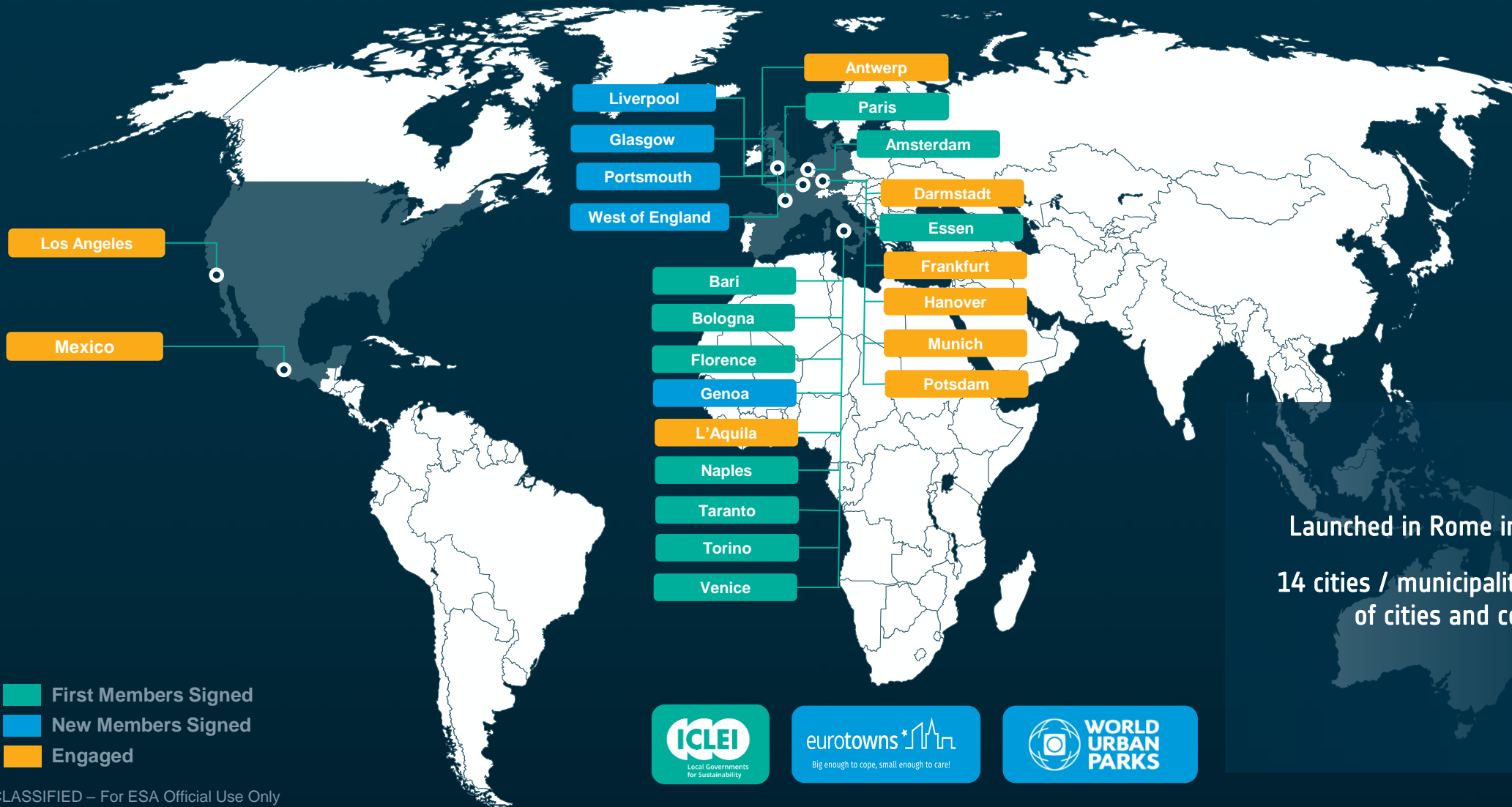
## BASS Programme

In comparison, 39% of companies supported by the BASS Programme as a whole are newcomers, and 70% are classified as SMEs.

The Smart and Green Cities initiative is attractive for both SMEs and corporates and equally appealing to entities that want to explore business opportunities in the downstream sector for the first time.

Half of the projects have been able to sell during the pilot.

# Space for Smart and Green Cities Task Force



Launched in Rome in September 2023.  
14 cities / municipalities and 3 networks of cities and continues to grow.

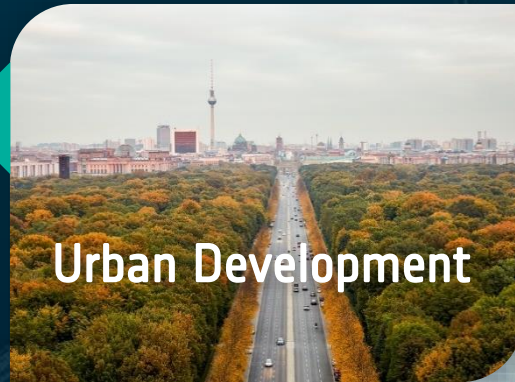


ESA UNCLASSIFIED – For ESA Official Use Only



## The Task Force has identified four key priority topics:

**Urban Development** – prioritising environmental impact reduction and the green economy to create and maintain healthier, more sustainable places to live and work



**Wellbeing and Inclusiveness** – creating positive impacts which are environmental, societal, and economic, improving the quality of life for all citizens.



**Energy** – focusing on a secure and sustainable supply of clean energy, as the risks of climate change and the need to reduce our carbon footprint grow ever more urgent



**Sustainable Mobility** – engaging technologies to reduce emissions in the transport sector and improve city infrastructure to support a green transition.

# Initiatives since 2019



## Satellite Earth Observation (SatEO)



- Mapping of urban sprawl and spatial analysis
- Air pollution data with ground-based monitors to develop spatially resolved maps of air pollution.
- 'Digital Twin' generation for urban asset management and planning.
- Provision of mapping information, feature characterisation, boundary delineation, and change detection.
- Monitoring and managing natural resources

## Satellite Navigation (SatNav)



- Supporting smart traffic management
- Real-time traffic updates and navigation assistance to help alleviate congestion.
- Location based services and navigation analytics to keep visitors safe and crowds flowing.
- Providing route optimisation for better flow of traffic and easier walkability.
- Enhancing navigation for emergency services ensuring faster response times, making streets safer.

## Satellite Communication (SatCom)



- Support seamless data transfer whenever the terrestrial communications are absent or not reliable;
- provide with a faster connectivity to support smart city infrastructure

# Space for Sustainable, Connected and Liveable Cities



# Space for Sustainable, Connected and Liveable Cities



The Call for Proposals will be open for Feasibility Studies and Demonstration Projects.

## Awarded Contracts:

- Are **co-funded up to 50%** by the European Space Agency, up to 80% in case of SMEs (pending authorization from National Delegation).
- Team needs to be based in one of the **eligible countries**: Austria, Belgium, Czech Republic, Denmark, Estonia, Finland, France, Germany, Hungary, Ireland, Italy, Lithuania, Luxembourg, Norway, the Netherlands, Poland, Portugal, Romania, Slovenia, Sweden, Switzerland and United Kingdom.

Call opens on **28 March** and Closing date is **30 September 2025**

Please do not wait until the end of the opening period to apply! ESA will be reviewing proposals regularly throughout the opening period.

New Use Cases will be added.  
Check regularly the webpage of the Call



ESA UNCLASSIFIED – For ESA Official Use Only



→ THE EUROPEAN SPACE AGENCY



## Sustainable Cities (Urban Sustainability)

- Requalification of abandoned industrial areas
- Local energy production
- Building Energy Consumption
- Circular economy



## Connected Cities (Urban Infrastructure)

- City walkability
- Optimising traffic flow
- Improving street lighting management
- Affordable housing



## Liveable Cities (Urban Environment)

- Climate change and emissions
- Urban park management
- Monitoring of Air Quality

***Building  
Energy  
Consumption***

***Air Quality  
Monitoring***

***Smart Lighting***

***Production of  
Local Energy***

***Green Index  
Measurements***

***Water quality  
monitoring and  
flood risk  
management***

# SPACE FOR SUSTAINABLE, CONNECTED AND LIVEABLE CITIES



SPACE SOLUTIONS

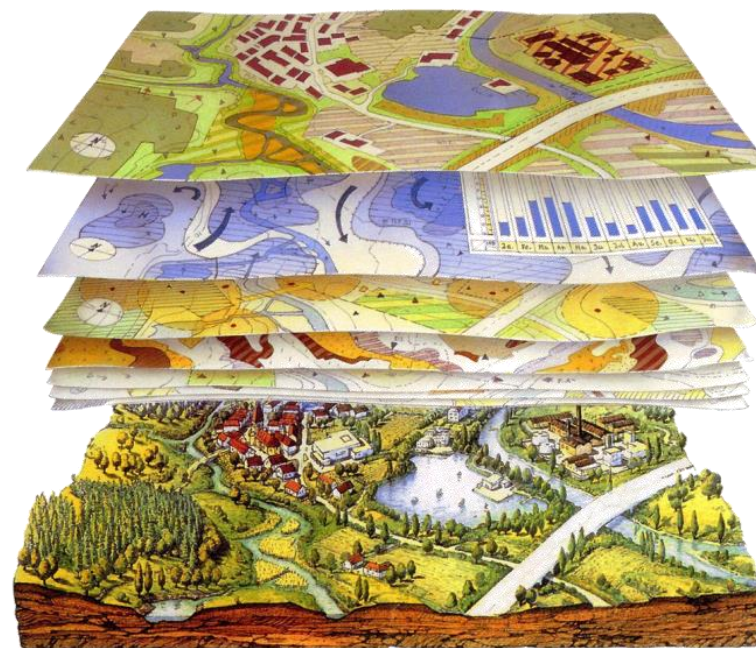
## Guest speaker **Jan Schäfer**

Team Lead, Geodata Management

Geoinformation, City Administration, City of Essen



# Space for Sustainable, Connected and Liveable Cities



Data collection and processing at the Metropolregion Ruhr & City of Essen



Mining

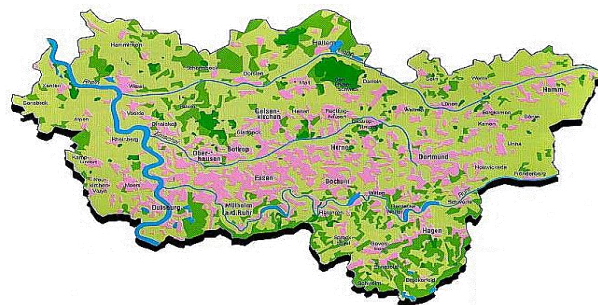


Green spaces



Connections

# RUHR GEBIET



5 mio. people



Industry



Administration

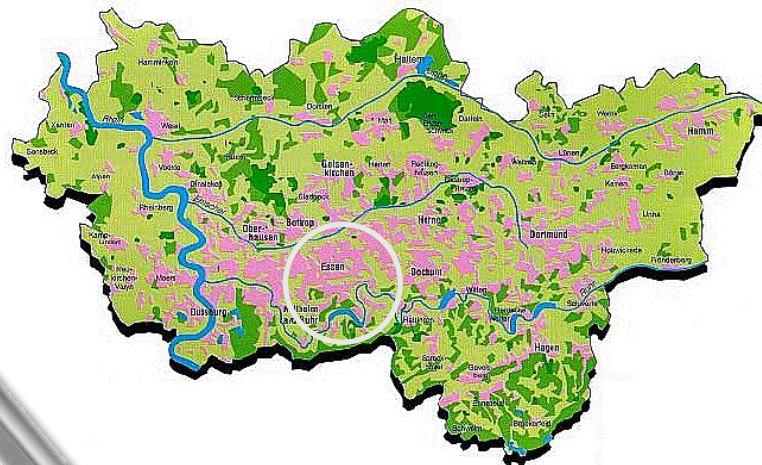


Culture



## City of Essen

Area size	210 km <sup>2</sup>
Population	575.000
Buildings	93.000
Parcels	135.000



Jan Schäfer - Stadt Essen, Amt f. Geoinformation, Vermessung und Kataster

STADT  
ESSEN

ESA UNCLASSIFIED – For ESA Official Use Only



→ THE EUROPEAN SPACE AGENCY

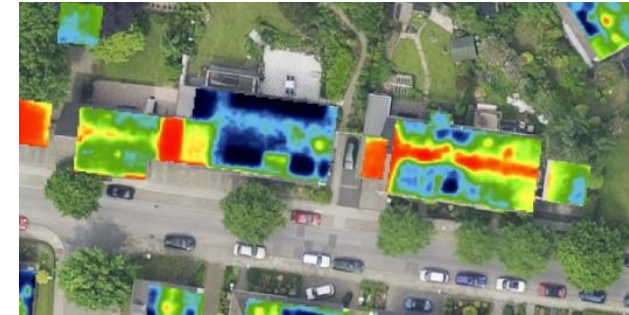
# Building Energy Consumption

Interested in detailed information (in terms of spatial and temporal resolution) of the

- Energy consumption and
- Heat emission.

Needed for:

- Planning phase
- Implementation phase
- Existing buildings
- Better designing new buildings or
- Retrofitting existing ones.



Heat Emission



Gasverbrauch der Wohngebäude  
kWh/a  
keine Wohngebäude  
0  
1 - 150.000  
150.001 - 250.000  
250.001 - 500.000  
500.001 - 750.000  
> 750.000  
% Anteil der Wohngebäude mit Gasanschluss  
Quelle: Stadtwerke Essen AG (2014)

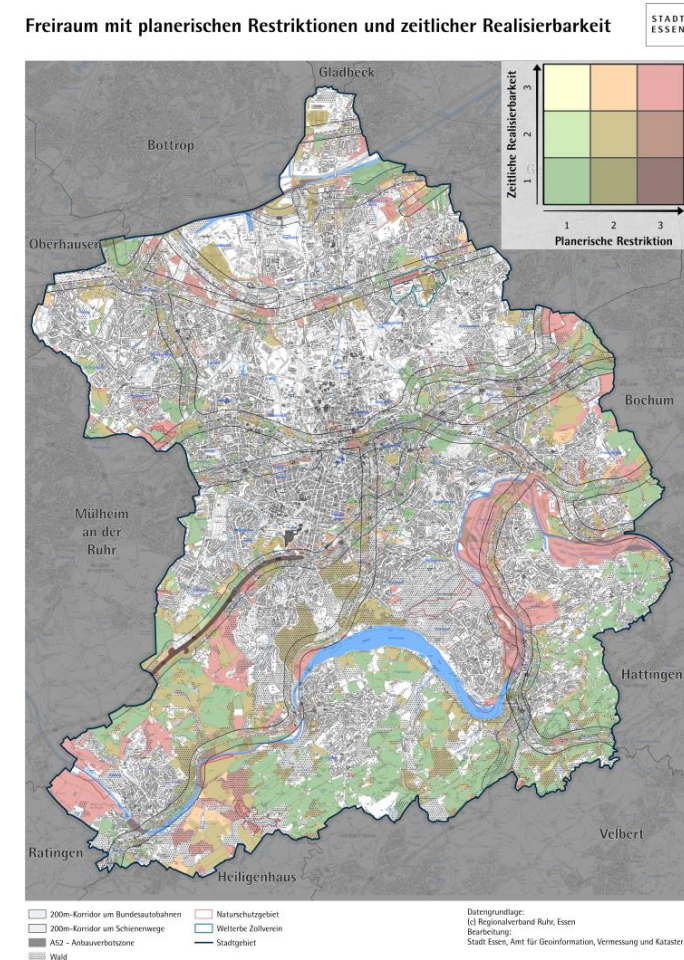
Energy consumption in a city quarter

Jan Schäfer - Stadt Essen, Amt f. Geoinformation, Vermessung und Kataster



# Production of Local Energy

- Urban heat energy planning has been conducted by external consultancy.
- Its implementation is the major challenge for the coming years.
- Monitoring of solar potential / installations will be an important component of urban green energy transformation.



Photovoltaics potential based on German Modernization package for climate protection and planning acceleration

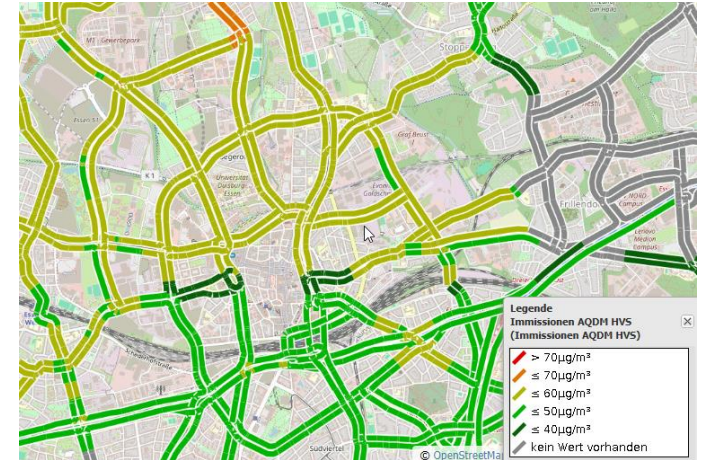


## Goals:

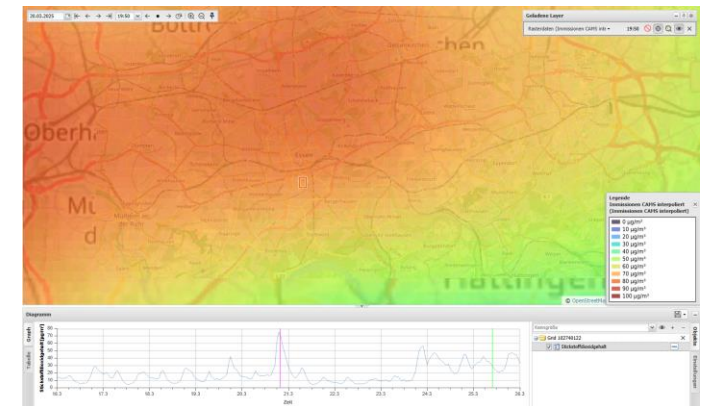
- Better health for the population
- Minimizing emissions from conventional vehicles
- Monitoring of current emissions
- Climate-change adaptation / mitigation

## Project CoMo (Connected Mobility Essen)

- Road trajectories are being equipped with sensors (optical and environmental) in order to better measure and manage traffic and emissions;
- Data from Copernicus (Sentinel 5P) is being utilized in order to account for overarching (ambient) emissions brought to the territory of Essen from its surroundings by wind also injecting these data into the emission models utilized for traffic management;
- AI-based strategies are being developed in order to better manage traffic and evaluate/optimize these strategies concerning emission reductions.



Traffic Emission



Copernicus Atmospheric Monitoring Service (CAMS)

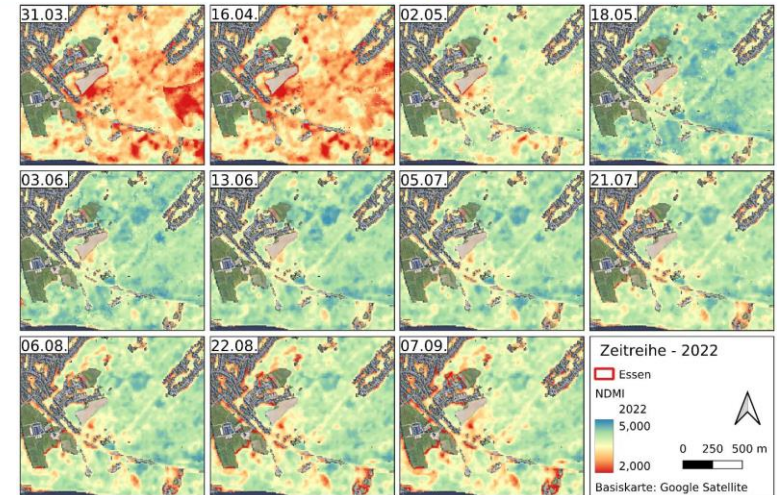
# Green Index Measurements



## Needs:

- Better tree health assessment
- Ecosystem service monitoring and preservation
- More effective watering and cost efficiency
- Climate-change adaptation / mitigation services

Essen is already involved in the **ESA BASS Demonstration Projects Urban Green View and AERIUS**. Proposed services should build on the results of the previous experience and improve the current performances



Space based Monitoring Tree Vitality (TreeCop)

Endbericht zur Fortschreibung der Klimaanalyse Stadt Essen

Planräume aus Klima-Analyse 2022

- Ausgleichsräume**
  - Ausgleichsräume Gewässer:** Die Erhaltung der Biotopfunktionen ist ein zentrales Umweltschutzziel, in der Übergangszone zum Gewässer keine Veränderung zulassen. Versickernde Zonen für die Neubebauung vermeiden.
  - Ausgleichsräume Freizeitanlagen:** Die städtischen Freizeitanlagen sollen als Ausgleichsräume gestärkt und aufgewertet werden. Dabei von Bebauung freihalten, keine Emissionen, Auslässe von Gerüchen und Belästigungsquellen erlauben.
  - Ausgleichsräume Park- u. Grünanlagen:** Biotopologisch wertvoller innerstädtischer Ausgleichsräume. Freizeitanlagen mit Bewässerung oder Versickerung, vorhandenen Vegetationsstrukturen erhalten und ausbauen. Eine Verengung der Grünflächen ist zu vermeiden. Förderung der Luftkühlung, Einsatz von luftkühlender Vegetation, Schaffung offenerer Mikroklima. Die Verengung ist bei direkt anschließenden Stadtquartieren zu vermeiden. Bei Entzerrung möglich ist: 1) bei Neubau: Entwässerung, Grünflächen, Regenwasserentlastung.
  - Ausgleichsräume Wald:** Die vorhandenen Waldflächen im Stadtgebiet sind bis hin zum Rand zu erhalten, um insbesondere die Luftkühlung und die Ausfaltung von Schadstoffen, Vorhandene Waldflächen erhalten, vergrößern und ausbauen. Freizeit- und Kulturflächen sind jedoch von Waldflächen freizuhalten.
- Lasträume**
  - Lasträume der Übergangszone locker und offen bebauten Wohngebiete:** Gebäudestrukturen und Begrünung und Bodenversickerung zu bewerten, Begrünung, Entwässerung zu bewerten, insbesondere bei Verkehrswegen, Freizeitanlagen, Kleinbaugebiet, Entwicklungsmaßnahmen vorhanden, Erhaltung und Ausbau von weiteren Grünstrukturen.
  - Lasträume der Übergangszone dicht bebauten Wohn- und Mischgebiete:** Kleinteilige, häufig bebauten Gebiete, weitere Verdichtung vermeiden, Verdichtete Erhellung durch aufgedeckte Dächer, keine massigen Gebäudekomplexe, Innenhofbegrünung, Begrünungen im Straßenniveau und auf Freizeitanlagen, Wasserelemente, Vegetation, Grünflächen, Grünflächen, Begrünung in Grünanlagen, insbesondere durch Dach- und Fassadenbegrünung, Erhaltung und Ausbau von weiteren Grünstrukturen, Emissionen, besonders des Kfz-Verkehrs.
  - Lasträume der hochverdichteten Innenstadt:** Extrem hohe Dichtungen, keine Ausweichmöglichkeiten mit hohen Schadstoffemissionen und belastendem Stadtklima, Innenhöfe begrünen, Erhalt und Erneuerung, insbesondere des Kfz-Verkehrs, Begrünungsmöglichkeiten erhalten und an den Rändern öffnen, Straßenniveau, Innenhöfe begrünen, Erhalt und Erneuerung, insbesondere des Kfz-Verkehrs, keine weitere Verdichtung zulassen, Erneuerung von Dach- und Fassadenbegrünung ermöglichen, Fassaden- und Luftkühlung.
  - Lasträume der Gewerbe- und Industriegebiete:** Diese Gebiete sind durch ihre hohen Emissionen, Luft- und Schadstoffbelastung, insbesondere durch Freizeitanlagen, Lager- bzw. Freizeitanlagen, Intensivemissionen, insbesondere im Übergangsbereich zu angrenzenden Wohngebieten, Auslässe von Gerüchen und Belästigungen an Straßen und Grundstücksanlagen, Emissionen und Verkehr reduzieren.



- Ausgleichsräume
- Lasträume
- Verkehr (Lasträume)

Urban Planning based on space based services (Urban Green View, AERIUS)



The City intends to act as pilot users for the proposals which are addressing their use cases

1. Building Energy Consumption
2. Production of Local Energy
3. Air Quality Monitoring
4. Green Index Measurements

The city has already been using data and innovative technologies

Pilot User in the Demonstration Projects Urban Green and AERIUS

Proposed services should build on the results of the previous experience and improve the current performances

# SPACE FOR SUSTAINABLE, CONNECTED AND LIVEABLE CITIES



SPACE SOLUTIONS

## Guest speaker **Mathieu Luinaud**

Project Manager

City of Paris





**Paris 15th district**  
***Mairie du 15<sup>e</sup> arrondissement de Paris***

Mathieu Luinaud  
Adjoint au Maire, Paris 15<sup>e</sup> arrondissement  
[Mathieu.luinaud@paris.fr](mailto:Mathieu.luinaud@paris.fr)

# The 15<sup>th</sup> district is the most populated district in Paris



- 232 000 inhabitants, 10% of Paris total population
- Would be equivalent to 11<sup>th</sup> biggest city in France
- 64 000 m.sq. of green space open to the public
- Direct exposure to the Seine river (quais de Grenelle)

## Legacy of innovation and technology piloting within the broader city of Paris



- **Pilot district for EU projects including “Cool & Low Noise Asphalt”**
- **Smart Lighting** pilot district in several streets, funded via “participatory budgeting”
- **Innovative solutions widely plebiscite** by the population
- We often propose broadening the initiatives to the entire City of Paris

# Focus on Smart Lighting deployment

- About **16 streets covered today** with smart lighting devices
- Objectives to **reduce energy consumption** and better **protect biodiversity while not compromising safety of citizens** in a night environment
- 3 initiatives via the smart lighting testing initiative:
  - Turning on/off the lighting based on pedestrian presence,
  - Modifying lighting temperature from neutral white (3000K) to an orange white (2200K)
  - Identifying free parking lots available via light sensors
- **Phased deployment:** started in 2018 with a 900k€ participatory budgeting pilot followed by a 2<sup>nd</sup> testing phase in 2021 and potentially new phases in the years to come

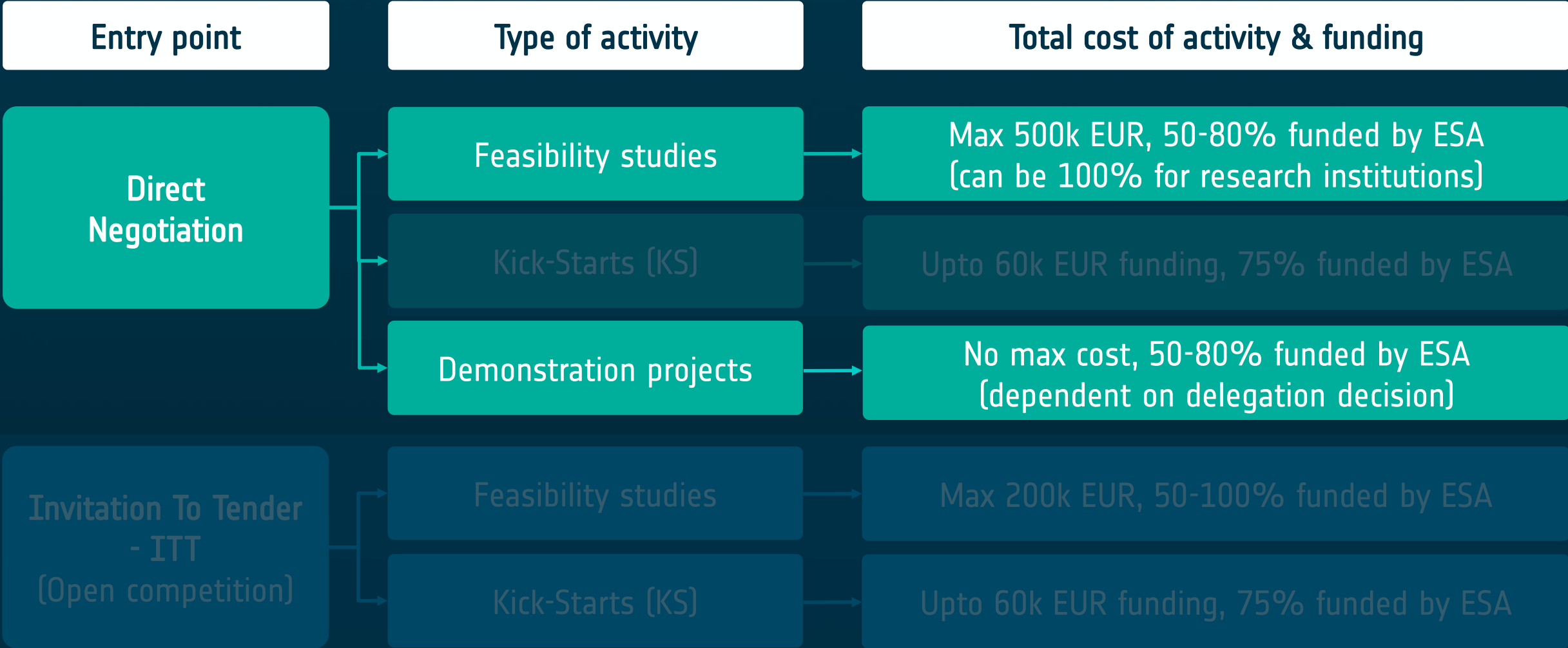


# The Challenges

We face multiple challenges in the daily management of the municipality services and the adaptation of the City to climate change with strong focus on :

- Green spaces monitoring and biodiversity protection
- Seine river quality monitoring
- Innovative solutions for lighting
- Pollution and air-quality monitoring
- Street quality management and monitoring

# BASS Funding Schemes

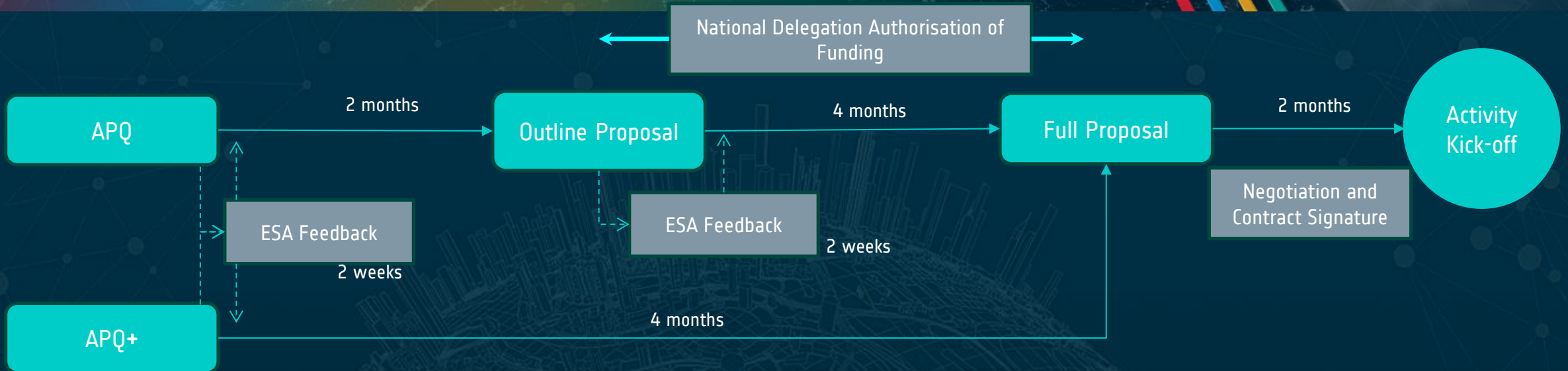


**IPRs remain with companies**

ES FUNDING CLASSIFIED FOR OFFICIAL USE ONLY



# How to apply – process



- Incremental procurement approach: APQ is the starting point – max. 8-page document with a standard template to present WHAT, WHY, HOW
- The APQ+ may substitute the outline proposal as an alternative entry point for **mature propositions only**
- Multiple Pitches with different ideas can be submitted
- Standard templates for proposals and deliverables before and during activity implementation

# How to apply – Activity Pitch Questionnaire (APQ)



1. **(WHO)** Company Background Information
2. **(WHAT)** do you want to offer your customers and what is the added-value?
3. **(WHY)** Who are the target beneficiaries addressed by your offer, and what is the expected impact?
4. **(HOW)** How do you intend to implement?

## (OPTIONAL) APQ+ Fast-Track Questions

ESA UNCLASSIFIED – For ESA Official Use Only

UNCLASSIFIED – For ESA Official Use Only



### ACTIVITY PITCH QUESTIONNAIRE (APQ)

ESA-TIAA-PO-2017-1054 - V. 3.19

The Activity Pitch Questionnaire (APQ) allows you to present your business idea in a reduced, standardised pitch. It helps ESA to quickly take informed decisions on next steps, pointing you to the most appropriate activity stream in case the APQ is considered acceptable (e.g., additional preparatory work, training, teaming up with some other partners, go ahead targeting a Feasibility Study or a Demonstration Project).

Gated and incremental approach: The submission process is based on the following three stages: the Activity Pitch Questionnaire (this form), the Outline Proposal, and the Full Proposal. In case the APQ is accepted by ESA, the answers to the questions of this APQ will be directly integrated in the Outline Proposal and extended as needed. In a similar way, the elements of the Outline Proposal, if accepted by ESA, can be directly integrated in the Full Proposal.



#### Prepare your pitch:

- Make sure you use the **LATEST VERSION** of the [APQ template](#).
- Explanations of terminology used here can be found in the document [‘Terminology used in ESA Business Applications’](#).
- Some explanations on how to prepare the APQ are available in the presentation [‘ESA Business Applications - Guidelines for APQ Preparation’](#).
- Choose the appropriate Open or Thematic Call. For further details, visit [‘ESA Opportunities for Open Calls’](#):

Call:  Activity:

*\*Please be aware, it's important to ensure you have selected the right options.\**

#### Submit your pitch:

- Contact your National Delegation<sup>1</sup> as specific rules may apply depending on your country.
- Please note that for a given idea, **ONLY ONE** APQ submission is possible (no subsequent submission of revised APQ Form(s) is allowed!).
- The APQ has a validity of **ONE YEAR**: in case of no draft of Outline Proposal is submitted within one year from the date of the APQ submission, the APQ will be considered by ESA as withdrawn.
- Your APQ shall be submitted using the **online web form submitter** accessible at [‘APQ Submit’](#). Please note that only PDF formats are accepted.

#### Activity Pitch Process:

Upon submission of your Activity Pitch Questionnaire:

- ESA may provide this Activity Pitch Questionnaire to and discuss it with the National Delegations of the countries of your consortium.
- ESA will assess your pitch.
- ESA will provide written feedback typically within 10 working days from the date of the APQ submission.

<sup>1</sup> Contact details of the National Delegations can be found under:

<https://business.esa.int/national-delegations>

For Greek entities, please note that Greece does not support non-competitive bids, therefore Greek proposals are not admissible under in this call.

UNCLASSIFIED – For  Official Use Only

#### Important Note:

- For optimal viewing and accurate completion of the template, please download and install the latest version of [Acrobat Reader](#), which is available for free.
- Click on "i" for more information.

#### Section AP.1 Background information

##### i AP.1.1 Idea name:

Brand name:  Full name:

##### i Thematic market area

Primary 1:  Subcategories 1:   
 Primary 2:  Subcategories 2:   
 Keywords 1:  Keywords 2:  Keywords 3:

##### i AP.1.2 Basic company information

Name:  Website:   
 Address:  Country:  Phone:   
 Contact point name:  Email:

##### i AP.1.3 Company background

Year of creation:  Revenues (Most recent figure in EUR) / Year:    
 Number of employees:  Industry / sector:   
 Coming from ESA BIC(\*):  (\*) If Yes, conclusion date of BIC contract:   
 More details:  Max 155 characters (no spaces)

##### i AP.1.4 Have you had any previous activities within Business Applications?

If Yes, indicate name of any previous activities and possible commercial outcomes  
 Max 270 characters (no spaces)

##### i AP.1.5 Are you applying with sub-contractors?

If Yes, who are the other entities?  
 Name:  Website:  Industry:  Country:   
 Name:  Website:  Industry:  Country:   
 Name:  Website:  Industry:  Country:   
 Roles in Activity:  Max 360 characters (no spaces)



1. The **authorisation form the National Delegation** will be required for the submission of the Full Proposal (third step in the application process), thus it is a good idea to initiate a dialogue with your National Delegation early on.
2. Please note that funding is **open to consortiums**, however all organisations and businesses must be located in an ESA member state participating in the programme BASS
3. To date, these countries include **Austria, Belgium, Czech Republic, Denmark, Estonia, Finland, France, Germany, Ireland, Italy, Hungary, Luxembourg, Netherlands, Norway, Poland, Portugal, Romania, Sweden, Switzerland, United Kingdom, Lithuania, or Slovakia.**
4. The contact information of the National Delegations can be found at <https://business.esa.int/national-delegations>

